



Construction hat



ASSEMBLY INSTRUCTIONS

TIME TO COMPLETE: 15 MINUTES LEVEL OF DIFFICULTY: EASY

GETTING STARTED

MATERIALS:

- Metal-edged ruler
- Butter knife
- Scissors or craft knife
- Cutting mat (optional)
- Multipurpose glue
- Tape



Hey Kids!
Make sure to
ask an adult
for help.

1 Score all the pieces: Using a ruler as a guide, run the back side of a butter knife firmly along dashed and dotted lines.

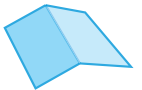


2 Using scissors or a craft knife and cutting mat, cut out pieces along solid lines.

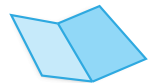


3 Fold all pieces along score lines, using the folding key below as a reference.

Mountain Fold

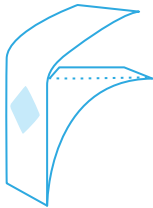


Valley Fold

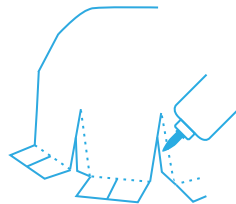


ASSEMBLE YOUR CONSTRUCTION HAT

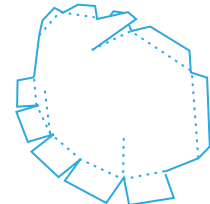
4 Top piece: Fold back top flap and glue to outer tabs.



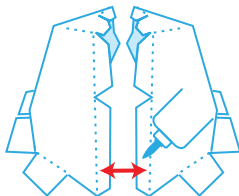
5 Left side: Glue tabs A and B behind nearest edges.



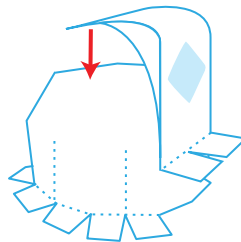
6 Glue tab C to top of tab D. Repeat steps 5 and 6 for right side.



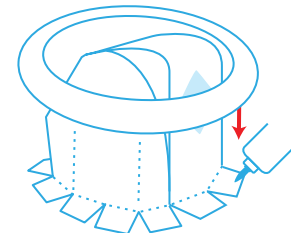
7 Attach right and left sides: Line up edges and, starting at the front, glue tabs on left side to underside of right side.



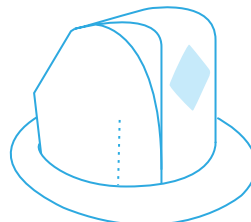
8 Place top piece in front, and tape the top flap to the top of the hat.



9 Place brim over the hat and glue to top of tabs.



10 You're done! Don't forget to write your name on the front of the hat!



Handy Manny Construction hat



TOP PIECE

TOP FLAP

OUTERTAB

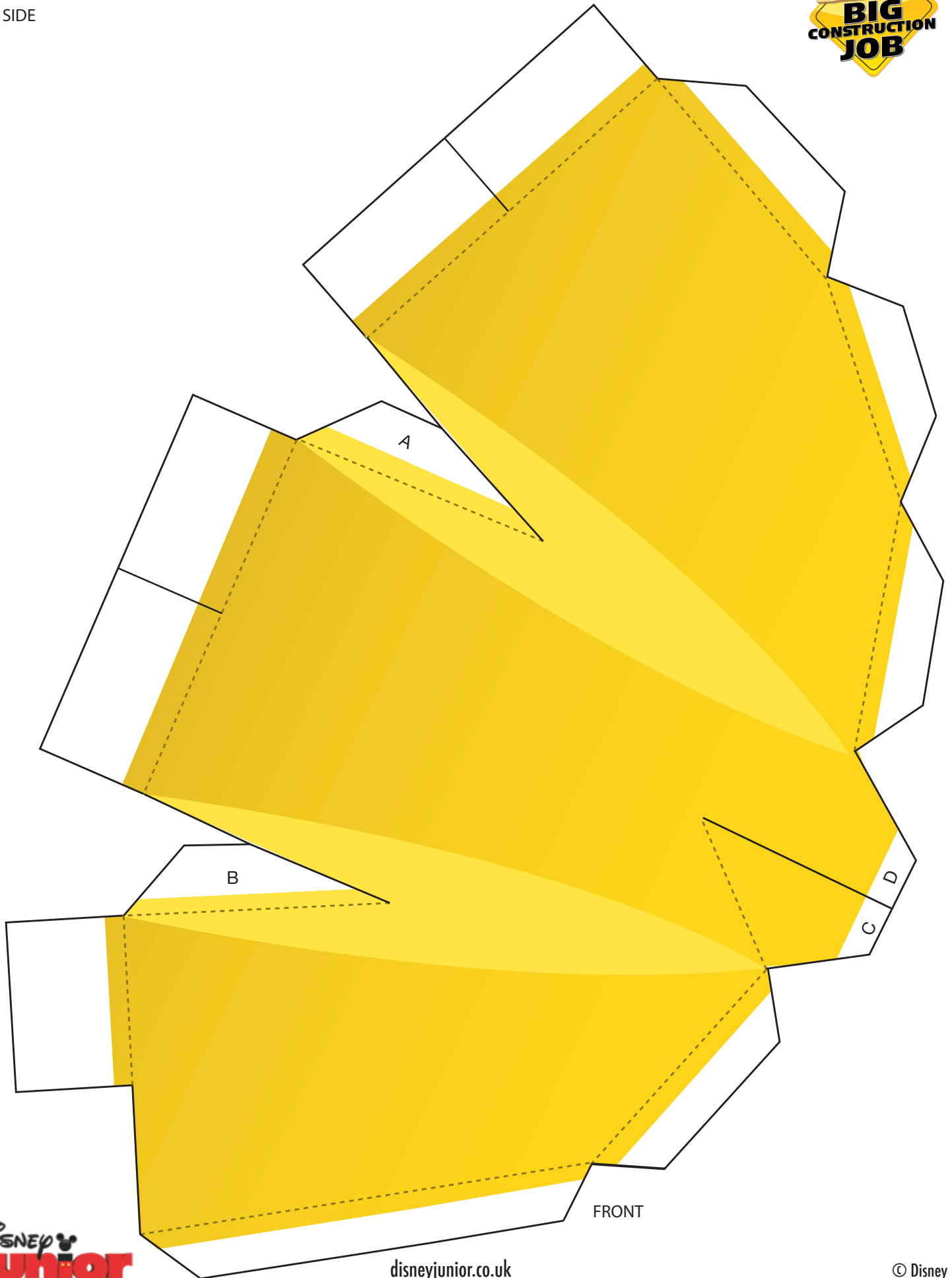
OUTERTAB



Handy Manny Construction hat



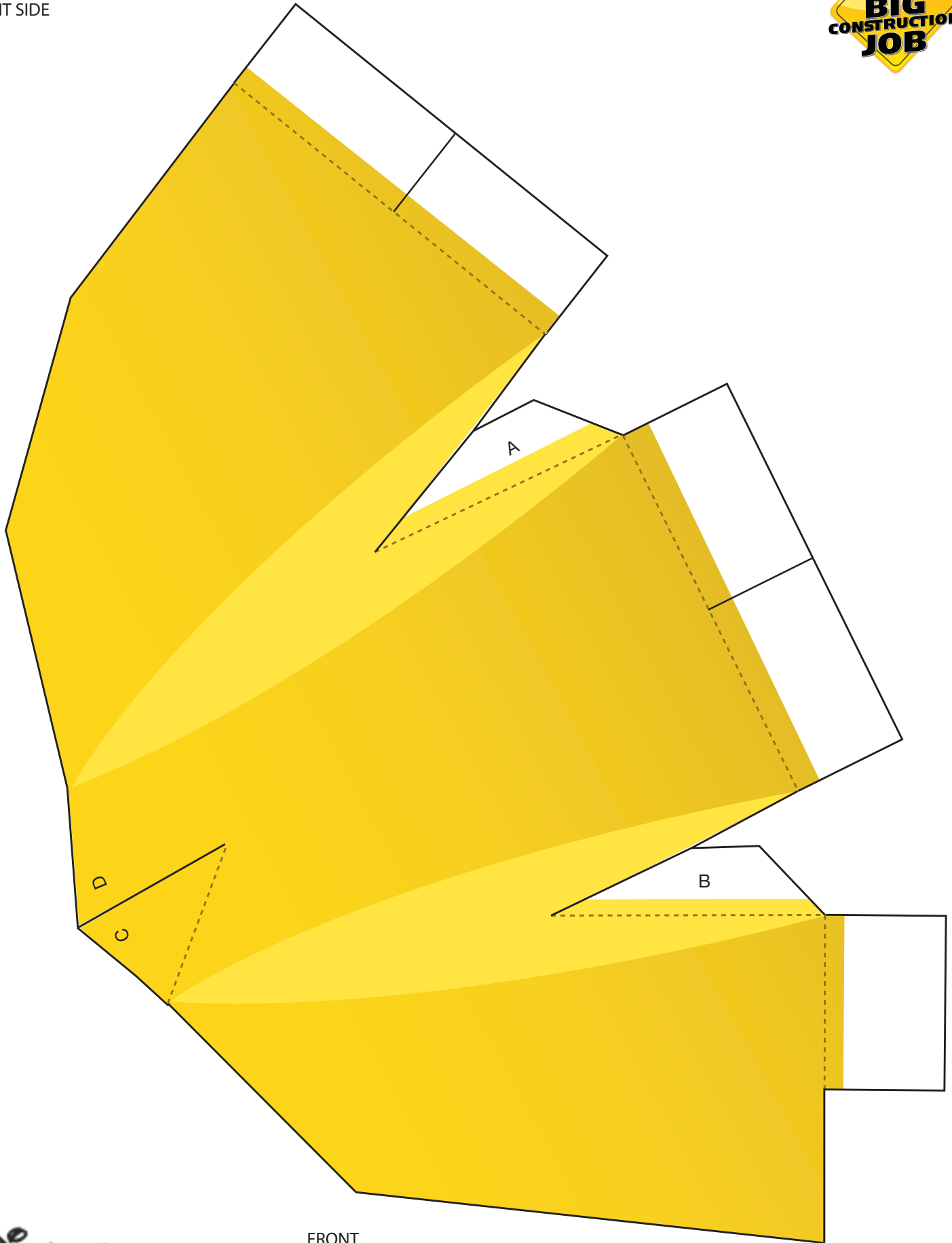
LEFT SIDE



Handy Manny Construction hat



RIGHT SIDE



FRONT





BRIM

© Disney